

**Toynbee Road  
Wimbledon, SW20 8SL**

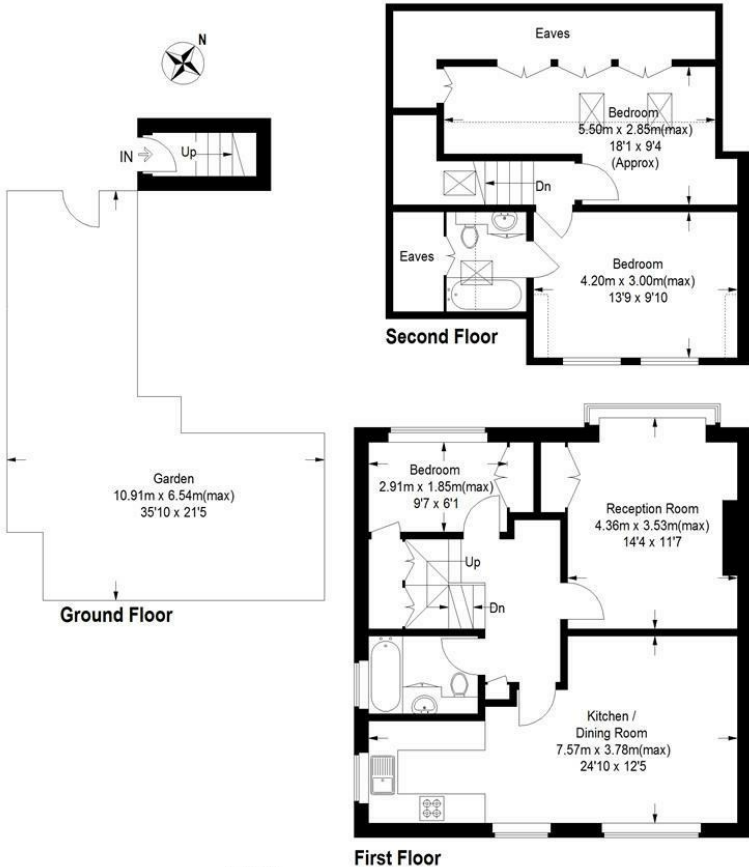
**£640,000 Leasehold**



**A beautiful, three bedroom, two bathroom, split-level purpose-built maisonette with a South-West facing private garden and no onward chain ideally located between Dundonald and Wimbledon Chase schools. This stunning maisonette with 1179 sq ft of family living space has been refurbished to a high standard and extended into the loft by the current owners to add two further bedrooms and an en-suite. In addition there is a bright front reception, large kitchen/diner, family bathroom and study on the first floor.**

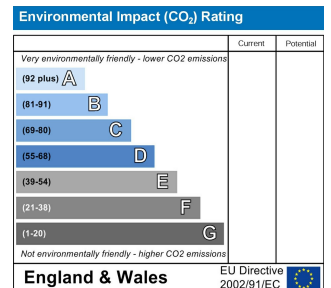
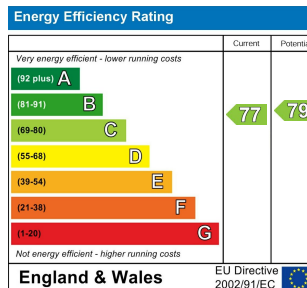
## Toynbee Road, SW20

Approximate Gross Internal Area  
 Ground Floor = 2.1 sq m / 23 sq ft  
 First Floor = 60.8 sq m / 654 sq ft  
 Second Floor (Including Eaves) = 46.6 sq m / 502 sq ft  
 Total = 109.5 sq m / 1179 sq ft



This floor plan is for representation purposes only and is not drawn to scale. Whilst every attempt has been made to ensure its accuracy measurements are approximate only and should be checked before making any decisions reliant upon them.  
 Copyright Bespokeplans.co.uk 2021 (ID741973)

- Three Bedrooms
- Purpose-Built Split-Level Maisonette
- Stunning Condition
- South-West Facing Garden
- Share of Freehold
- 1179 Sq Ft
- Sought After Dundonald Park Area
- No Onward Chain
- EPC rating C



For Free Mortgage Quote and Best Mortgage Rates, call an Ellisons Mortgage Advisor on 020 8944 9494



Although these particulars are believed to be correct, their accuracy is not guaranteed and they do not form part of any contract.

Celebrating 30 years of successful Sales and Lettings in Merton

